

JOSHUA GAGLIARDI – Image list

503 North Tremont St. Unit C, Oceanside, CA. 92054
email: jg181202@ohio.edu - phone: (513) 257-5843



1. “Body of Water” (Site-specific installation) 2008– Thermoformed plastic and water vapor, 6”X11”

“Body of Water” is a thermoformed plastic infant that contains a small amount of water. When the sun warms the contained water, a cycle of evaporation, dripping and re-evaporation takes place allowing vapor to rise and form on the inside surface of the representation of the infant.



2. and 3. “Points of Perspective” (Installation) 2009 – Polished and raw bronze, 5 ½” X 8” each, installed dimensions vary depending on placement

* “Points of perspective” is comprised of four small bronze deer, measuring 5 ½”X 8” each. By placing the deer together and displaying them close to the floor, this piece is meant to suggest an assertion of power by the viewer.



4. and 5. “Drifting Unconscious” 2007– Bronze, 8”X24”



6. and 7. “Carry Me Away Into The Wind” 2008– Edible thistle birdseed and red velvet pillow, 7”X11”

“Carry Me Away Into the Wind” consists of an edible cast birdseed head. I wanted to observe birds eating this edible self-portrait with hopes that it would, metaphorically, release my soul into the air while also supplying necessary sustenance for new life to occur. What I found is that the birds didn’t gracefully or romantically eat this head. Instead, they ravaged it without feeling or awareness of their actions caring only about survival.



8. “Release Me” 2009- Edible thistle birdseed and red velvet pillow, 3”X6”





9. “Dismantle This Pistol” 2009 - Edible thistle birdseed and red velvet pillow, 4.5”X6”

As a result of “Carry Me Away Into the Wind” and “Release Me”, I continued to explore this inherent struggle between man and nature. I began creating man-made objects meant to destroy life and nature in hopes that metaphorically, these objects would give balance to the struggle.



10. “Dismantle This Pistol” 2009 - Edible thistle birdseed and red velvet pillow, 9”X34”



11. “Time is Running Out” 2009 – Edible thistle birdseed, 3”X4”



12. “Enlightened Beings” (Installation) 2006– wax and lighting, 17”X22”

“Enlightened Beings” consists of two identical bodies contemplating identity, one with both hands in front of his face and the other with his hands at shoulder width. A pane of glass separates the two bodies joining their reflections articulating the path between the unknown and known identity.



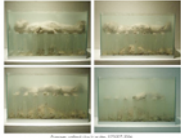
13. “Waiting for Rain” (Photographic documentation of site specific, time-based installation) 2006-Hand built life size body, unfired earthenware clay next to stream in the woods over the course of three months, dimensions variable

I placed this unfired clay body in nature so I could document the changes that occurred to it due to wind, rain and snow erosion. For three months (Feb 06- May 06) I visited the sculpture everyday to document its’ changing progress. As time went by, the body began to take on characteristics of land erosion, showing rills and degradation. In May, it rained hard for a few days washing the body away into pieces downstream allowing the sculptures ultimate purpose to be fulfilled.



14. “Swept Away” (Photographic documentation of site specific, time based installation) 2006 - Life cast body, unfired earthenware clay placed in stream, dimensions variable

*After completing “Waiting for Rain”, I kept trying to imagine the moment when the stream overtook the body, washing it away with the current. I created another human form that I could place into nature to observe this action. The stream gently degraded the body until it washed completely away. As the moving water washed the clay downstream, a trail of reminisce emerged from the body implying movement in the opposite direction. The body was slowly being swept away.



15. “Passage” (Photographic documentation of time-based installation) 2006 – unfired clay in water, 10”X20”

*I created “Passage” to pursue an interest in the transference of our life energy passing into the next existence. “Passage” consists of an unfired human form that has been allowed to dissolve in water through a shelf located in the middle of the water tank. During the exhibit, the body was placed on the shelf and documented as it broke down, passing through to the other side.



16. “Nature of Truth” (Photographic documentation of time-based installation) 2006 –Life cast body, unfired clay in water, Dimensions variable- to view video documentation, please visit <http://www.youtube.com/watch?v=NDLeW5PIW2M>

*The Nature of truth is a modified version of “Swept Away” and Waiting for Rain” meant for viewing in a gallery setting. The piece consists of a hollow human body placed into a fabricated viewing pool filled with water. During the exhibit, the clay body slaked downward and eventually collapsed releasing the air within into the gallery for the viewers to breathe in.



17. and 18. “The Last Tango” 2006- bronze, life size

* Made while working at Bronze Artwork Foundry. Created for Lark Diamond Cates.



19. “Founder of the Humane Society” 2007- bronze, 2.5’X 3’

Made while working at Bronze Artwork Foundry. Created for Kitty Cantrell. Now on display at the Humane Society headquarters in Washington DC.



20. “Canary Row Workers Tribute” 2008- bronze, 1 ½ life size

* Made while working at Bronze Artwork. Created for *Nature Works inc.* Now on display in the Caesar Chavez Park in downtown San Diego.